



# HÄFELE

EL9000 -TCS

## DIGITAL DOOR LOCK



USER MANUAL

---

## Product features

---



### Four way solution

Available to use one solution of Password, Fingerprint, Smart card as well as key override.

---



### Random security coding function

When you enter your home with friends or other people, you don't want to show secret code to them. In this case, you may press any number randomly without limitation and then enter your secret code at final. Then, you can open the door without revealing your secret code.

---



### Individual management for Smart card

Individual registration or delete of Smart card is available.

---



### Panic Release handle type

It facilitates escapes while in danger opening easily with a simple action of lever down.

---



### High reliance mechanical mortise lock type

It has high reliability mechanical mortise lock type with installing the locking device on door body inside.

---



### Auto lock / Auto re-lock function

When the door is closed, to be locked status automatically. And if users do not open the door after unlocking with password, etc, it is to be locked automatically for higher security.

---



### Double lock function

When double lock system is activated, the door cannot be opened from outside even with the registered card key or secret code.

---



### Trespass alarm function

When the door is opened by force with hammer or other devices, door lock function is suspended with alarm sound.

---



### Prevent mischief and hacking

With 3 times of abnormal try with wrong secret code, function of door lock is suspended with alarm sound.

---



### Battery level indicator and alarm for battery replacement time

Easy to check battery status with 3 step level indicator and alarming battery replacement time with sound & lamp.

---



## Safety precautions



Do not disassemble or alter the lock. Assembling or disassembling the door lock may damage the product. Damages to the product caused by unauthorized persons may result in damages to your property. Please contact our Customer Service.



If the product generates harmful gases or smoke, please remove the batteries immediately from the product. If you do not take this step immediately, the product may suffer severe damage.



Please keep the product away from water or any liquids. If the product is exposed to salty water or liquids, please wipe off the moisture with a soft cloth. If moisture or foreign materials penetrate the product, remove the batteries immediately and contact the Service Agency or Customer Service Center for advice. Using a product contaminated with foreign materials may cause problems.



Please check the batteries every 6 months to see if the batteries are leaking and to check the cleanliness of battery terminals. If leakage is discovered, please wipe out with a dry cloth and replace the new batteries. In case of exposure to leakage, wash with soap and water immediately.



Do not clean the product with flammable materials such as alcohol, benzene or thinners. Such materials may damage the surface or cause a fire.



Batteries should not be exposed directly to heat sources or flames, or submerged in water, because they may leak or explode, resulting in severe damage. Please do not use damaged batteries.



Do not allow the battery electrodes to make contact with metals such as keys, as the battery may overheat, causing explosion or severe damage.



Please do not close the door with the deadbolt in the locked position. It may damage the product or cause a malfunction.



Do not force to pull the front cover. It may damage the product or cause a malfunction.



Please do not mix old with new batteries or use different types. Always use new alkaline batteries. Please make sure the batteries are inserted correctly (+/-) as indicated in the battery compartment. Otherwise, it may cause a leaks or explosions.

## To be read before using

Product composition and components .....	4
Name and function of Exterior modular .....	5
Name and function of Interior modular .....	6
How to check battery capacity.....	7
How to replace battery.....	7
How to apply external power in the emergency.....	8
How to use touch-pad and random security coding function .....	9
How to change mode (Normal mode > Safety mode) .....	10
How to change mode (Safety mode > Normal mode) .....	10
Normal Mode .....	11
How to register secret code at Normal mode .....	11
How to register card key in Normal mode .....	11
How to delete all card key in Normal mode .....	12
How to register fingerprint (Normal mode) .....	13
How to delete all fingerprint (Normal mode) .....	13
How to register fingerprint when the fingerprint cover is out of order .....	14
Safety mode .....	15
How to register secret code (Safety mode) .....	15
How to register card key at safety mode .....	16
How to delete all card data at safety mode .....	17
How to delete individual card data at safety mode ...	17
How to register fingerprint in safety mode .....	18
How to delete all fingerprint data in safety mode .....	19
How to delete individual fingerprint in safety mode ...	19
Guest secret mode (Temporary use) .....	20
How to set manager in safety mode .....	21
Change manager code in safety mode .....	21
Changer manager card in safety mode .....	21

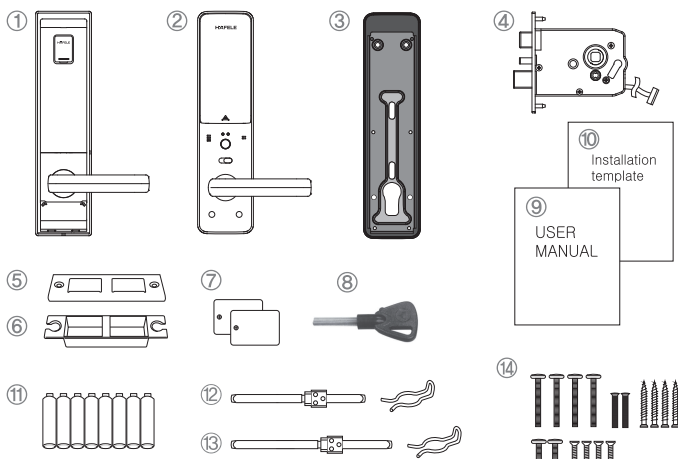
## Basic function

How to open from outdoor (secret code, card, mute function) .....	22
How to lock the door from outdoor .....	23
How to open from indoor .....	24
How to lock the door from indoor .....	24

## Applications

How to set double locking function .....	25
Auto-locking system .....	26
Auto-relocking system .....	26
How to set auto/manual locking system .....	27
How to control volume level .....	27
Warning function against mischief or hacking .....	28
Warning alarm function against trespassing by force .....	28
System reset .....	29

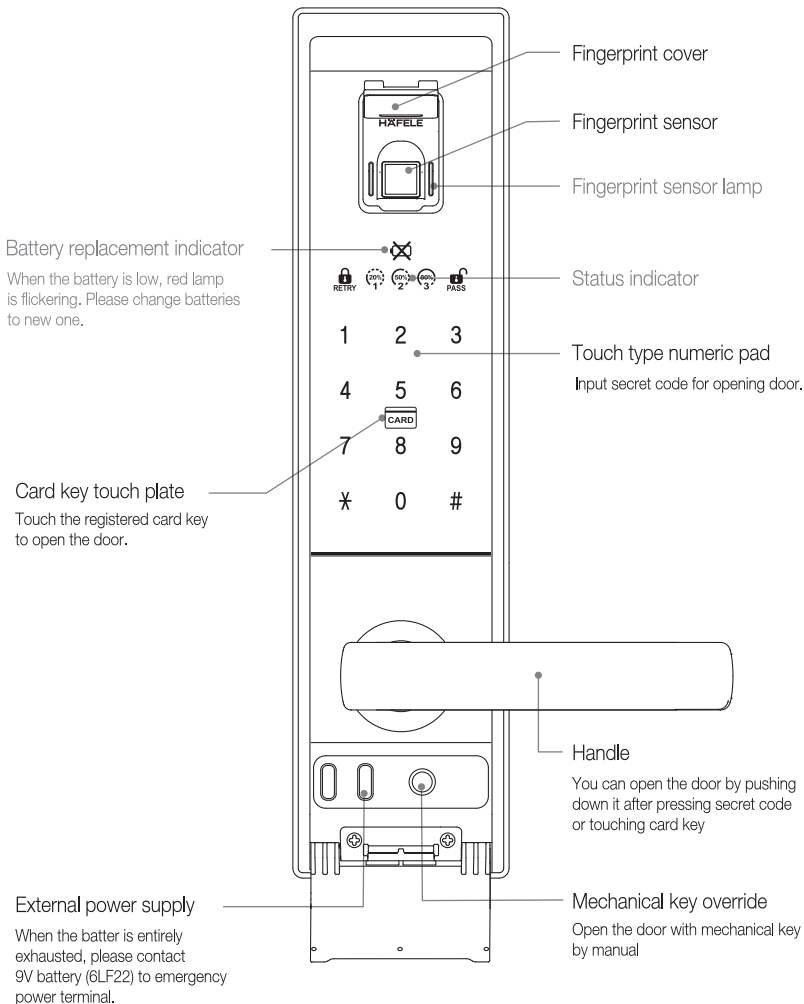
✓ Product composition and components



Name	Product specification	Remark
1. Front Ass'y	76mm (W) x 306mm (H) x 28mm (D)	Including rubber pad
2. Back Ass'y	71mm (W) x 298.6mm (H) x 30.7mm (D)	
3. Back Cover	76mm (W) x 303.6mm (H) x 7.9mm (D)	Including rubber pad
4. Mortise lock	123mm (W) x 109.5mm (H) x 24.5mm (D)	
5. Striker	36mm (W) x 106mm (H) x 1.5mm (D)	
6. Striker housing	24mm (W) x 102mm (H) x 18mm (D)	
7. Card key	2EA	
8. Mechanical key	3EA	
9. User manual	Main user manual	Including warranty form
10. Installation template	Use for making hole at the door	
11. Battery	8 pcs (1.5V, 'AA' Size, LR6 Alkaline)	
12. Handle shaft	89(W) X 12(H) X 12(D)mm + Stop-ring	
13. Handle shaft (M)	126.9(W) X 12(H) X 12(D)mm + Stop-ring	
14. SCREW	5 x 30mm 4EA : For back cover 5 x 24.5mm 2EA : For inner lower part 5 x 8mm 2EA : For inner upper part 3/16 in x 1/2 inch, 4EA : For mortise and striker 4 x 19mm 4EA : For front/Back plate	TH M5 x 30 OH M5 x 24.5 TH M5 x 8 FH M5 3/16 x 1/2 FH T4 x 19

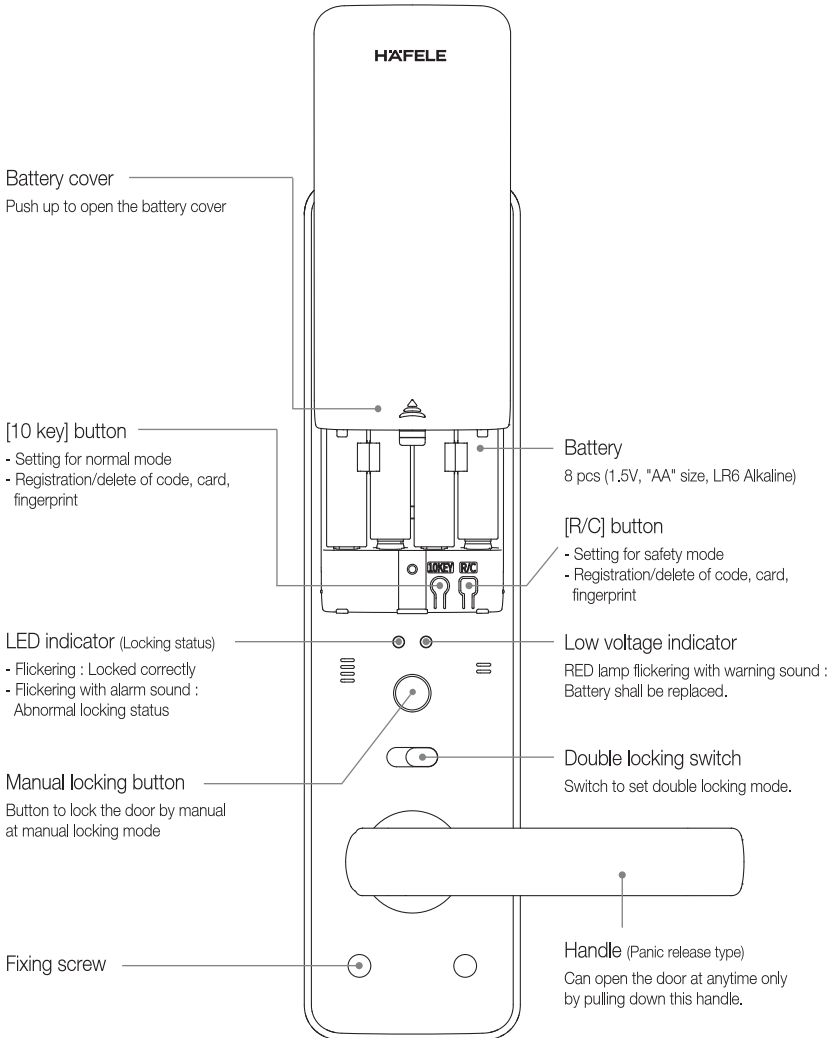
To be read before using

✓ Name and function of each part - Front ass'y



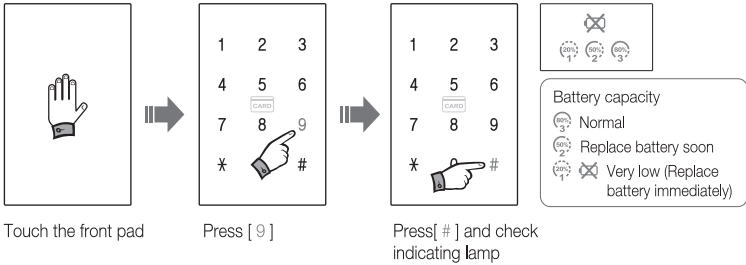


Name and function of each part - Back ass'y

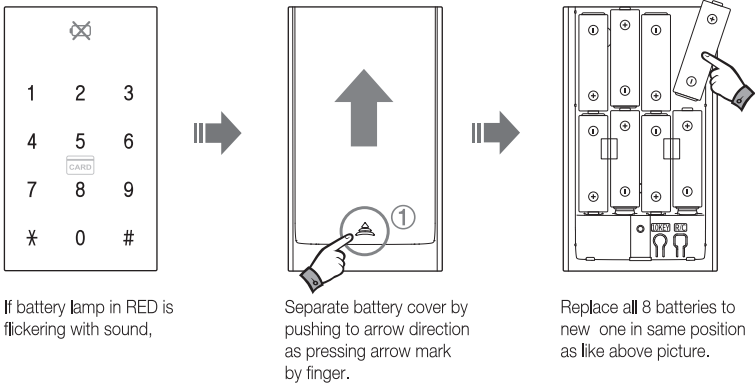


✓ How to check battery capacity / How to replace battery

1. Check battery capacity



2. Battery replacement



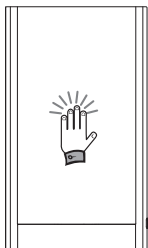
! Note

- Life of battery is around one year based on 10 times of uses a day.
- Battery life can be vary depending on battery's manufacturer, production date, installed environment and usage frequency.
- Second hand battery or usage of different type batteries can be a reason of door lock's malfunction.
- Do not use rechargeable battery.
- Leakage on battery can be caused and it is very harmful for door lock's operation. Please check batteries periodically (at least every 6 months) and if there is any of leakage on battery, replace all to new batteries.

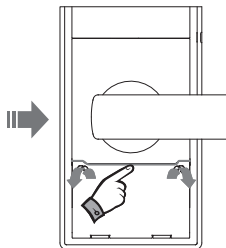
✓ How to apply external power in the emergency

1. How to apply external power in the emergency

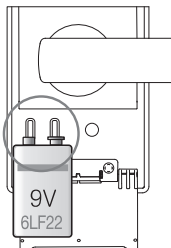
When the battery is entirely exhausted and door lock is not activated, please contact 9V (6LF22) battery to emergency power terminal. Once the door lock is activated, open the door by secret code and replace the batteries in back ass'y.



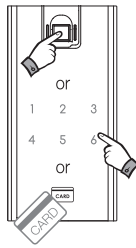
...?  
Not activated....



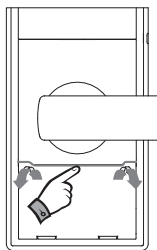
Open the cover  
with finger



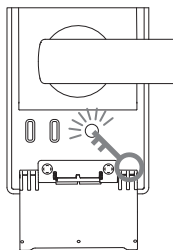
Contact 9V battery and open the door  
by secret code or card key. (♪-Briirik)



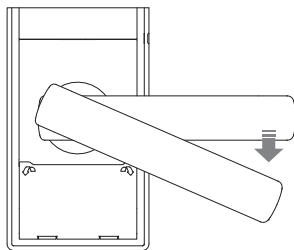
2. How to use mechanical override key



Open the cover  
with finger



Insert key and keep  
turning status



Pull down the handle  
and open the door

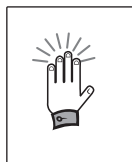
ⓘ Note

- Position of polarity is in regardless.
- Please keep mechanical override key separately for usage in the emergency.
- After using mechanical override key, please store it safely.

## To be read before using

### ✓ How to use touch-pad and random security coding function

Random security coding function - Press any number randomly without limitation and then enter your secret code at final. With this function, you can open the door without revealing your secret code to others.



Touch the front pad



Numeric buttons are displayed



Press random code (Ex : 1389)  
Press secret code (Ex : 123456) and [\*].  
Pull down the handle, then door is opened.

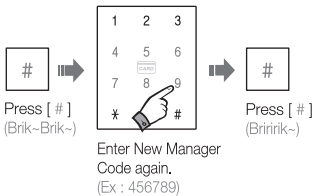
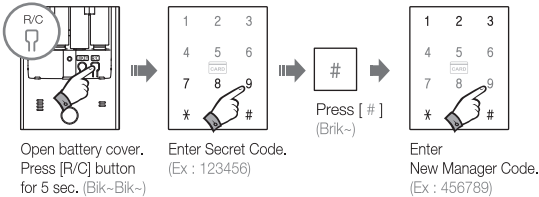


#### ⚠ Note

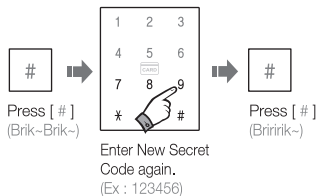
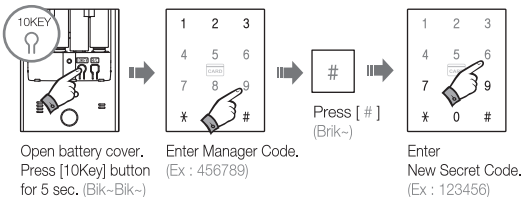
- Do not wear gloves during operation for touch pad.
- When you use random security coding function, actual secret code shall be entered at final.
- Please use soft cloth when you clean touch pad



## ✓ How to change mode (Normal mode → Safety mode)



## ✓ How to change mode (Safety mode → Normal mode)



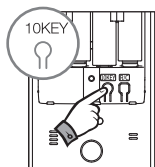
## ⚠ Note

- Manager code & manager card shall be controlled by authorized person for security.
- Existing secret code, card and fingerprint are deleted automatically after registration of new manager code.
- Only one of manager code can be registered with 6 ~ 12 digits.
- After input manager code which was used at safety mode and press [#], all code/card/fingerprint which were registered at safety mode shall be deleted. Newly registered code is for usage at normal mode.
- Max. 10EA of Secret code can be registered with 6 to 12 digits.
- To register multiple code, input new secret code and press \* successively.
- Previous code is deleted automatically with registration of new code.
- Please do the change / registration of new code at door opened status to prevent unintentional locking.
- After changing secret code, please verify it by unlocking with new secret code.

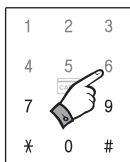
## To be read before using

### How to register secret code in normal mode

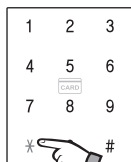
### Normal Mode



Open battery cover and press [10key] button shortly. (Bik)



Press new secret code. (Ex : 123456)

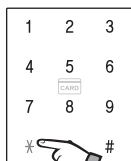


Press [\*] button, then new code is registered with (BrikBrik) sound.



Press [\*]  
(BrikBrik)

To register more user code  
...  
(Max.10EA of User code can be registered.)

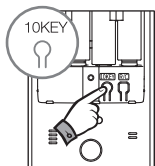


Complete registration by [\*]

### Note

- Factory setting (Mode : Normal mode, Secret code : 123456)
- Max. 10EA of Secret code can be registered with 6 to 12 digits.
- To register multiple code, input new secret code and press [\*] successively.
- Previous code is deleted automatically with registration of new code.
- Please do the change/registration of new code at door opened status to prevent unintentional locking.
- After changing secret code, please verify it by unlocking with new secret code.

### How to register card key in normal mode



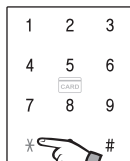
Open battery cover and press [10key] button shortly. (Bik)



Touch the card key one by one.

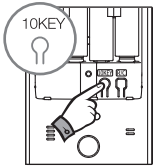


Max.50EA of User card key can be registered.

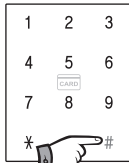


Complete registration by [\*]

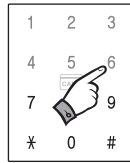
✓ How to delete all card key in normal mode



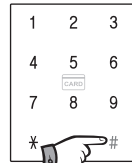
Open the battery cover and press [10KEY] button shortly. (Bik~)



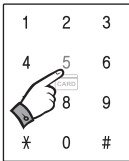
Press [#]



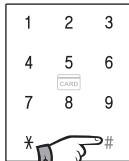
Input registered user code. (Ex : 123456)



Press [#] (Birik~)



Press [5]



Press [#]

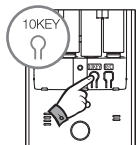
Delete confirm (Biririk~)

ⓘ Note

- Previous card key memory is deleted automatically after registration of new card.
- To register multiple secret code, press new secret code successively and press [\*].
- To finish registration, please press [\*] one more time.
- Max. 50 card keys can be registered.
- For high security, please use cards which are supplied by HÄFELE.

## To be read before using

### How to register fingerprint in normal mode



Open the battery cover and press [10KEY] button shortly. (Bik-)



Touch your finger on sensor (LED turned on)



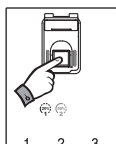
First sensing LED (Bik)



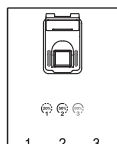
Touch your finger on sensor again



Second sensing LED (Bik)



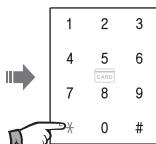
Touch your finger on sensor again



Third sensing LED (Bik)

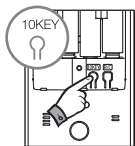


Complete registration (Birik-Birik-)



Press [\*] (Bik-)

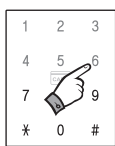
### How to delete all fingerprint in normal mode



Open the battery cover and press [10Key] button shortly. (Bik-)



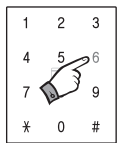
Press [#]



Input registered user code. (Ex : 123456)



Press [#]



Press [6]



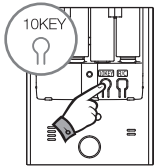
Press [#]



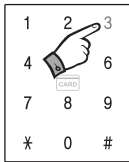
Delete complete (Note mark, Biririk-)



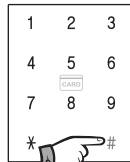
**How to register fingerprint when the fingerprint cover is out of order**



Open the battery cover and press [10Key] button shortly. (Bik--)



Press [3]



Press [#]



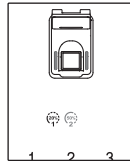
Touch your finger on sensor (LED turned on)



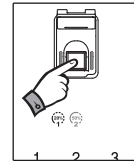
First sensing LED (Bik)



Touch your finger on sensor again



Second sensing LED (Bik)



Touch your finger on sensor again



Third sensing LED (Bik)



Complete registration (BirikBirik--)

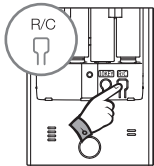
**Note**

- To register fingerprint, proceed sensing 3 times.  
(If different fingerprint is applied, not registered with warning sound.)
- Max. 100EA of fingerprint can be registered.
- To finish registration, please press [\*] one more time.
- Even though new fingerprint is registered, previous fingerprint data is not deleted.

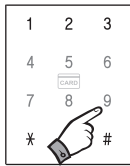
## To be read before using

### ✓ How to register secret code in safety mode

⚠ Manager code & manager card shall be controlled by authorized person for security.

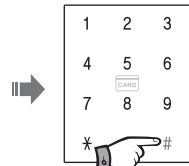


Open the battery cover and press [R/C] button shortly. (Bik-)

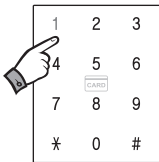


Registered manager code (Ex : 456789) or manager card

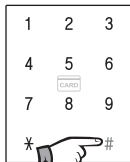
or



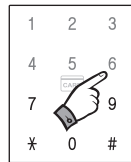
Press [#]



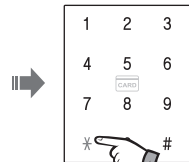
Press [1]



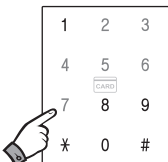
Press [#]



Input new user code (Ex : 123456)



Press [\*]  
(BirikBirik)



Input new user code (Ex : 234567)



Press [\*]  
(BirikBirik)

...

To register more user code (Max.10EA of User code can be registerd)



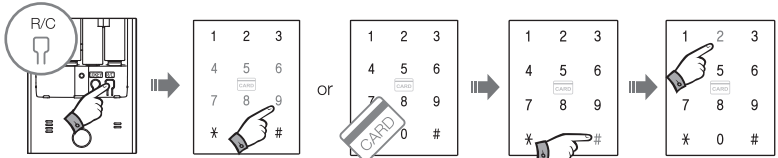
Press [\*]  
Complete with sound (BirikBirik)

#### ⓘ Note

- Max. 10EA of Secret code can be registered with 6 to 12 digits.
- To register multiple code, input new secret code and press [\*] successively.
- To finish registration, please press [\*] one more time.
- Previous code is deleted automatically with registration of new code.
- Please do the change/registration of new code at door opened status to prevent unintentional locking.
- After changing secret code, please verify it by unlocking with new secret code.

✓ How to register card key in safety mode

⚠ Even though new card is registered, previous card data is not deleted.  
If same registration number is applied, hold registration mode with warning sound.

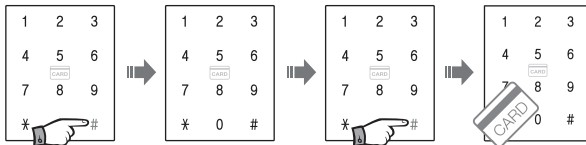


Open the battery cover and press [R/C] button shortly. (Birk)

Manager code (Ex : 456789) or manager card

Press [#]

Press [2]

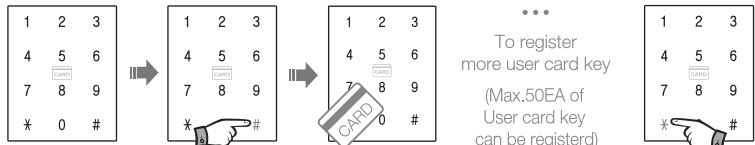


Press [#]

Card registration number (2 digits)  
0 1 ... 5 0

Press [#] (Birk)

Touch the card key. (BirkBirk)



Card registration number (2 digits)  
0 2 ... 5 0

Press [#]

Touch the card key. (BirkBirk)

...  
To register more user card key  
(Max.50EA of User card key can be registerd)

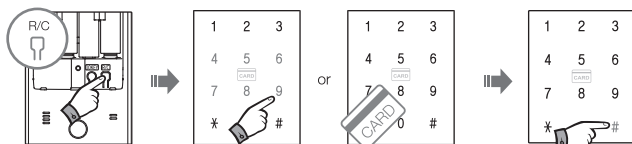
Press [\*]  
Complete with sound (BirkBirk)

⚠ Note

- To register multiple card, repeat to input new registration number and touch the another card key successively.
- To finish registration, please press [\*] one more time.
- Registration number shall be two digits. (01 ~ 50)  
(Ex : 1 => 01, 2 => 02, etc.)

## To be read before using

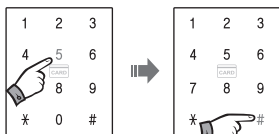
### ✓ How to delete all card data in safety mode



Open the battery cover and press [R/C] button shortly. (Bik)

Manager code (Ex : 456789) or manager card

Press [#]

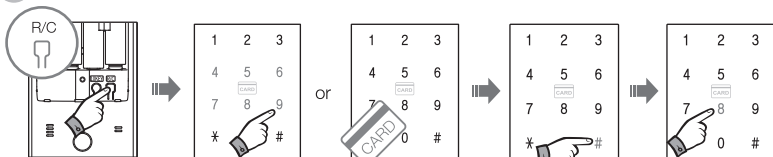


Press [5]

Press [#]  
(Biririk~)

### ✓ How to delete individual card data in safety mode

i It is not available to delete multiple individual card data in one time.



Open the battery cover and press [R/C] button shortly. (Bik)

Manager code (Ex : 456789) or manager card

Press [#]

Press [8]



Press [#]

Select card registration number  
0 1 ... 5 0

Press [#]  
(BirikBirik~)

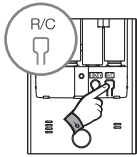
Press [\*]  
Complete with sound  
(BirikBirik~)

#### ! Note

- To use this function, manager has to remember the exact registration number of each user card.
- If there is no card data on certain registration number, warning sound will be caused. (Bik~Bik~)



✓ How to register fingerprint in safety mode



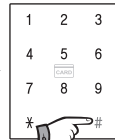
Open the battery cover and press [R/C] button shortly. (Bik)



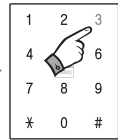
Manager code (Ex : 456789) or manager card



or



Press [#]



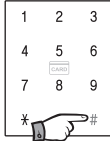
Press [3]



Press [#]



Select fingerprint registration number (3 digits)



Press [#]



Touch your finger on sensor (LED turned on)



First sensing LED (Bik)

0 0 1 ... 1 0 0



Touch your finger on sensor again



Second sensing LED (Bik)



Touch your finger on sensor again



Third sensing LED (Bik)



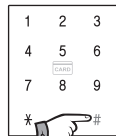
Complete registration (BirikBirik~)

To register more fingerprint



Fingerprint registration number (3 digits)

0 0 2 ... 1 0 0



Press [#]



Touch your finger on sensor (3 times)



Complete registration (BirikBirik~)



Press [#]

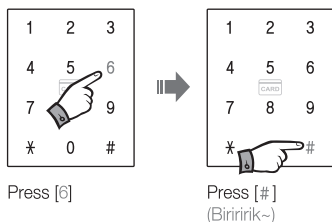
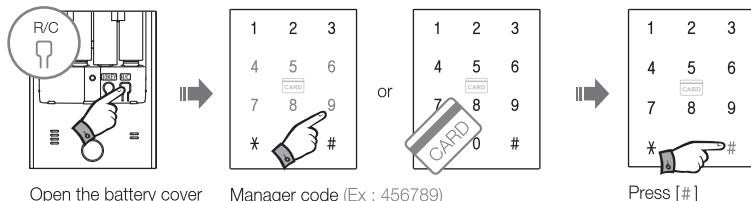
ⓘ Note

- To register multiple fingerprint, repeat to input new registration number (3 digits) and touch the another fingerprint 3 times.
  - To finish registration, please press [#].
  - Registration number shall be three digits. (001 ~ 100) (Ex : 1 => 001, 2 => 002, etc.)
- \* If the registration number is not 3digits, warning sound will be caused.

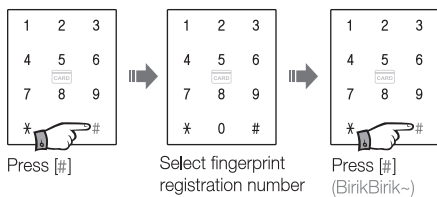
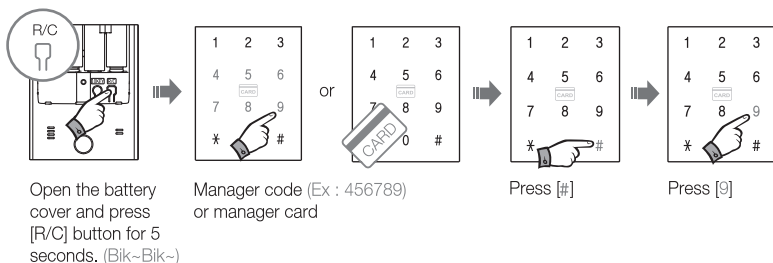
## To be read before using

### ✓ How to delete all fingerprint data in safety mode

⚠ Deleted fingerprint can't be recovered.



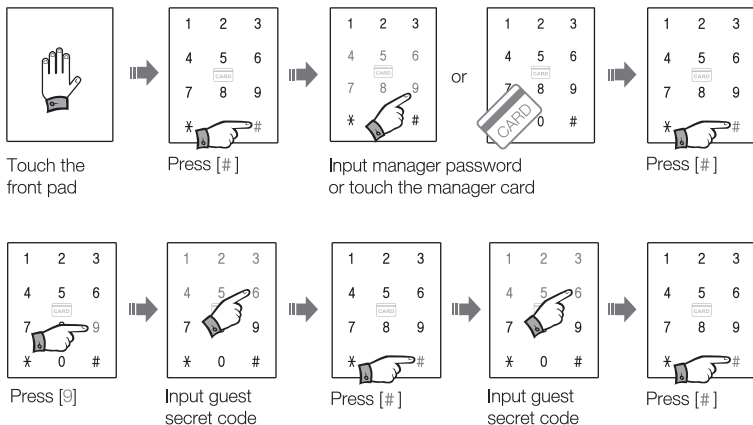
### ✓ How to delete individual fingerprint in safety mode



0 0 1 ... 1 0 0

#### ⚠ Note

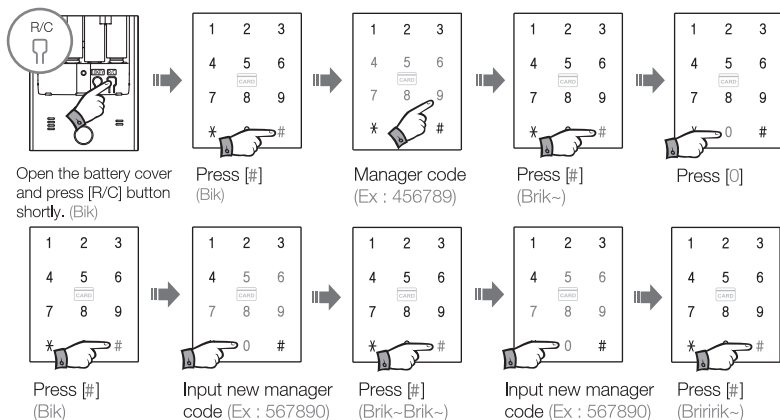
- To use this function, manager has to remember the exact registration number of each user fingerprint.
- If there is no card data on certain registration number, warning sound will be caused. (Bik~Bik~)

 Guest secret code (Temporary use)

 Note

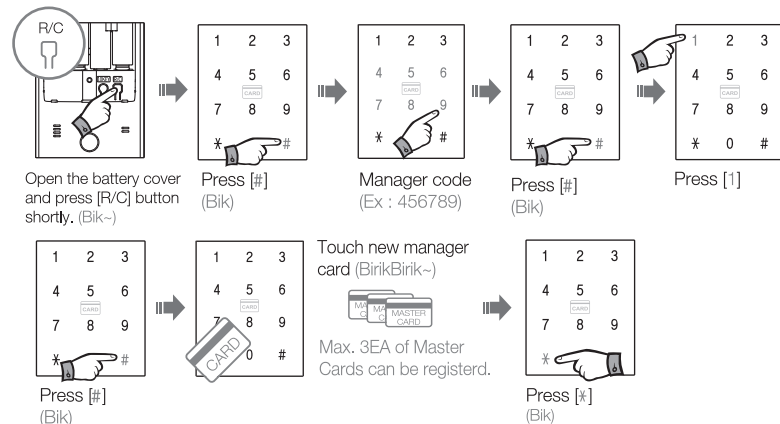
- Guest secret code is for temporary use. Once a guest open the door, this code is deleted.
- Guest secret code function is only available in safety mode.
- Only one code can be registered with 6 ~ 12 digits.
- For guest secret code, random security coding function is not available.

## To be read before using

### Change manager code in safety mode



### Change manager card in safety mode

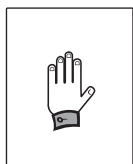


### Note

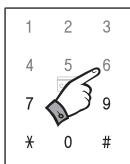
- Only one manager code available.
- Manager code can be registered with 6 to 12 digits.
- Max. 3EA of manager cards can be registered.
- Previous manager cards are deleted automatically with registration of new manager card.
- To register multiple manager card, register Max. 3EA successively and press [\*].

## ✓ How to open from outdoor (Secret code, card, Mute function)

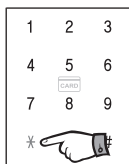
### 1. Open the door using secret code



Touch the front pad



Enter secret code  
(Ex : 123456)

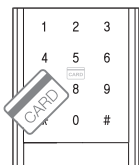


Press [\*] and door  
is unlocked



(Biririk~)

### 2. Open the door using card key

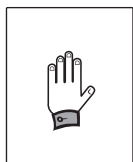


- 1) Touch the registered card key to card contact point
- 2) Pull down the handle and open the door



- 1) Open the fingerprint cover, and touch the registered fingerprint on sensor
- 2) Pull down the handle and open the door

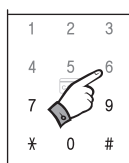
### 4. Open the door with mute function (No sound)



Press front pad by  
finger tip for 3 seconds



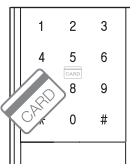
Detach the finger  
and numeric pad is  
turned on



Enter secret code  
(Ex : 123456)



Press [\*] and door  
is unlocked



Touch the card

or



Fingerprint



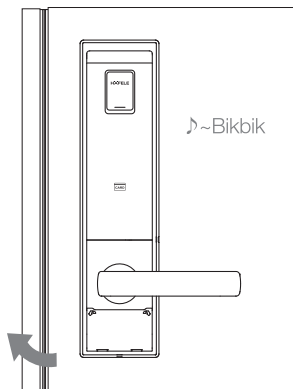
Pull down the  
handle and  
open the door

### ⓘ Note

- Mute mode is sustained for 10 seconds.
- If the door is not opened by handle after applying secret code or card key, there will be abnormal locking alarm sound.

✓ How to lock the door from outdoor

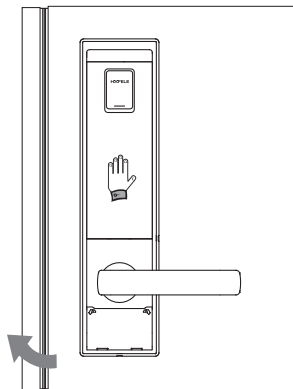
1. Lock the door at auto-locking mode



When the door is closed,  
it is locked automatically with beeping sound.

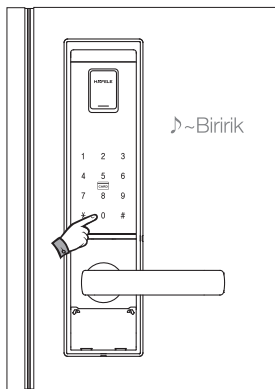
※ If the door is not closed correctly,  
warning sound can be caused.  
Please check and confirm the door closing status

2. Lock door at manual-locking mode



Close door and touch the front pad

※ At manual-locking mode, door is not locked automatically even though the door is closed.

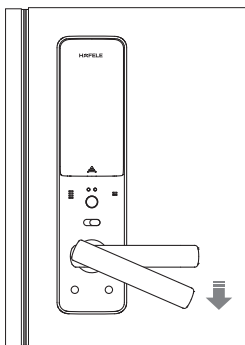


Press 0 button, then door will be locked

⚠ Note

- Please confirm that the door is properly closed by pulling down the handle.

## ✓ How to open from indoor



### PANIC RELEASE TYPE

Just pulling down the handle, door lock is opened at anytime.

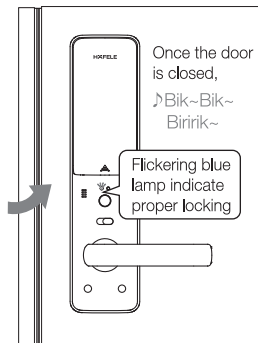
### What's "PANIC RELEASE"?

Door can be opened with simple action of pulling down the handle. Even the door lock is out of order, people can escape easily in the emergency such as fire etc.

## ✓ How to lock the door from indoor

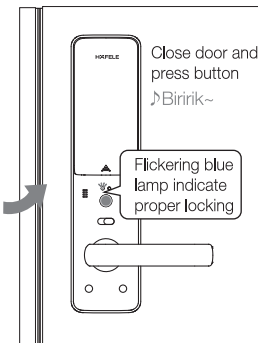
### 1. In auto-locking mode

When the door is closed, door is locked with beep sound automatically.



### 2. Manual-locking mode

After closing door, press manual lock button, then door is locked with beep sound.

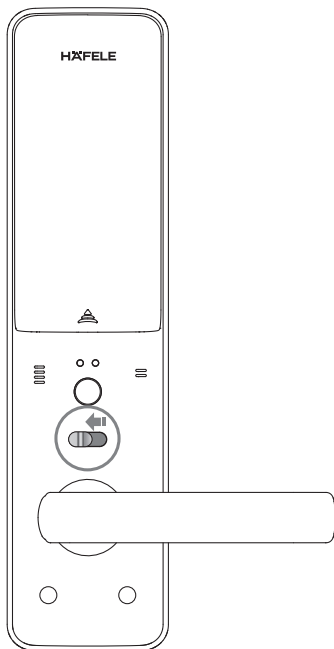


### ! Note

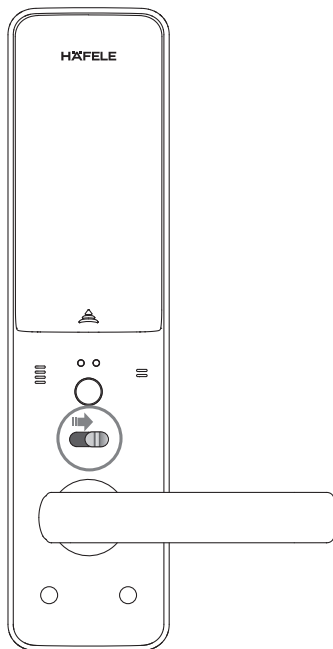
- Before closing the door, make sure that deadbolt is not extrude.
- ※ If the door is not closed correctly, warning sound can be caused. Please check and confirm the door closing status.

### ✓ How to set double locking function

In [Double lock] mode, function of door lock is suspended and can't open the door from outside.



[Double lock] mode installed (RED)  
Unlocking system from front body  
is suspended.



[Double lock] mode released (GREEN)  
Normal operation

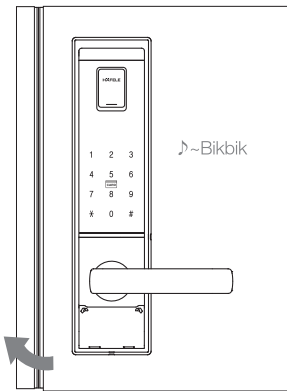
#### ⚠ Note

- [Double locking] mode shall be installed after the door is closed.
- Even in [Double locking] mode, it is available to open the door from indoor by pulling down handle.  
=> Panic release system
- With pulling down handle from indoor, [Double locking] mode shall be released automatically.
- Even in [Double locking] mode, intrusion warning is working properly.
- If the sound is set to mute, there is no status sound. Only indicating lamp is flickering.



### ✓ Auto-locking system

When the door is closed, it will be locked automatically.  
(Please refer to next page for setting method.)



### ✓ Auto-relocking system

If the door is not opened within 7 seconds after input secret code, it will be relocked automatically to protect user's property.



Unlock the door

After  
1·2·····7 seconds



Auto-relocking

### ! Note

- Auto-relocking system is different from "Auto-locking".
- This is fixed function and can't be released.

### ✓ How to set auto/manual locking system

- In Auto-locking mode, door will be locked automatically after closing.
- In Manual-locking mode, door will be locked with pressing manual lock button after closing.



Touch the front pad



Press [#] button



Input secret code  
(Ex : 123456)

or



Touch the card key



Press [#] button



5 [Auto-locking] mode



6 [Manual-locking] mode

#### ⚠ Note

- After setting complete, pull down the handle and close the door.
- In case of [Manual lock] mode, to make it unlocked status, door lock shall be opened by secret code, card key or indoor handle.

### ✓ How to control volume level

Sound volume can be controlled by 8 levels. (Mute to maximum level)



Touch the front pad



Press [#] button



Input secret code  
(Ex : 123456)

or



Touch the card key



Press [#] button



2 Volume down



3 Volume up

※ Press 1 to make maximum level and press 0 to make mute in one time.

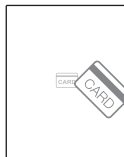
#### ⚠ Note

- In mute status, numeric lamp is flickering with entering secret code.
- After setting, pull down the handle and close the door.

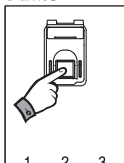
Warning function against mischief or hacking



Applying wrong secret code over 3 times



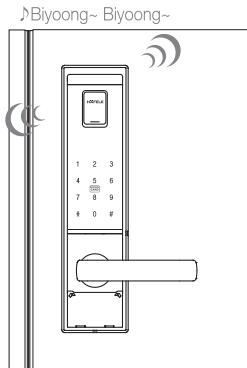
Applying unregistered card key over 3 times



Applying unregistered fingerprint over 5 times



Operate fingerprint cover over 10 times with no fingerprint sensing

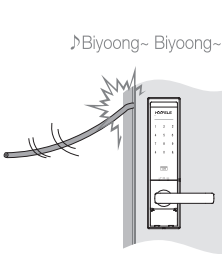


After alarm sound, system is suspended for 3 minute

Warning alarm function against trespassing by force

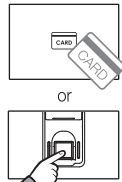
Once the door is locked, alarm system is activated in 5 seconds.

If there is any trying of trespassing by force, it is warning with strong alarm sound for 3 minutes.



How to release warning sound

1. Touch the smart card

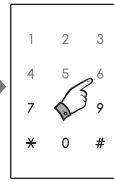


Touch fingerprint

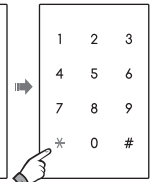
2. Input secret code



Or press [\*]



Input secret code (Ex : 123456)

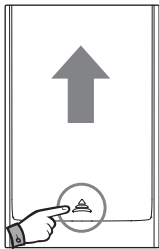


Press [\*] again. Warning sound will be stop

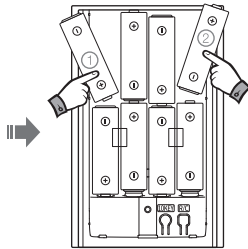
Note

- With applying wrong code for 3 times or unregistered card for 3 times, alarm system is activated with warning sound and all the function of door lock is suspended for 3 minutes.
- In case warning function against mischief/hacking is activated, it will be released after 3 minutes.
- Warning status can be released by [Manual lock] button.
- Trespass warning alarm continues for 3 minutes.
- If the trespass warning alarm is released by secret code or card key, system return to normal status.

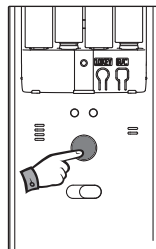
✓ System reset



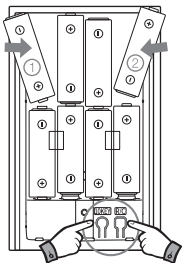
Open battery cover



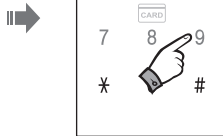
Remove battery ① & ②



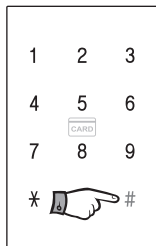
Press open button to make it discharged entirely.



Pressing both of [10Key] and [R/C] button, insert batteries one by one.



Input manager code or touch manager card.



Press [#] button for 5 seconds. System reset is completed.

No.	Item	Setting
1	Master code	Deleted
2	Master card	Deleted
3	User secret code	Deleted
4	User card	Deleted
5	Fingerprint	Deleted
6	Sound volume	Level 7
7	Auto/Manual locking	Manual locking
8	Suspend user code/card/fingerprint	Released

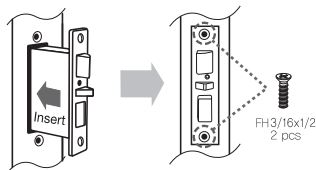
※ After reset, all secret code, card & fingerprint are deleted. So, new secret code, card or fingerprint shall be registered for proper operation.

## Note

- ➔ Installation method for left handed door and right handed door is same
- ➔ Before Installation, adjust the direction of latch bolt and striker as per door opening direction

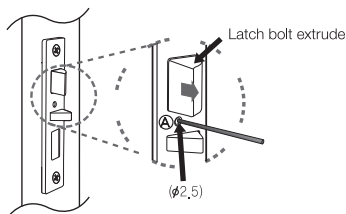
### Mortise lock installation

Insert mortise body to mortise hole on side door and fix with screws.  
Pull out mortise cable to indoor side.

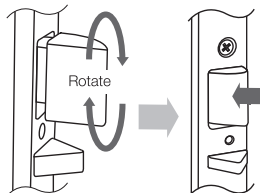


### How to change the direction of latch bolt

1. Insert pin to hole and push it

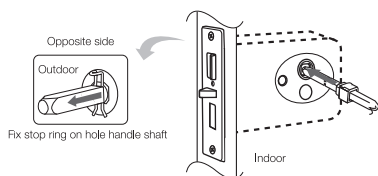


2. Change the direction of latch bolt and press it to be put in the mortise body



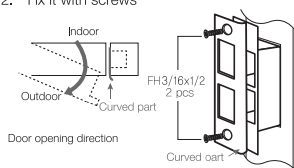
### How to install handle shaft

1. Insert handle shaft from indoor to outdoor
2. Fix stop ring in the hole on outer part of handle shaft



### How to install striker

1. Insert striker housing and set the curved part of striker to direct of door opening
2. Fix it with screws



## Operating system of mortise lock [Clutch type]

- ✘ Theory: With pulling down the handle, clutch is operating mechanically.
- ✘ When the door is locked, outdoor handle is not connected to deadbolt. Even though handle is pulling down, deadbolt is remained to Latch bolt and deadbolt sustain locked position and enhance security level.  
If the door is unlocked, handle is connected to deadbolt and working together.



### Beneficial point

- (1) **High security level:** In locked status, outer handle is not connected to deadbolt. (Independent movement of latch bolt and deadbolt)
- (2) **Durability:** Ensure long life because deadbolt is not operating by motor system.
- (3) **Easy installation:** Direction of latch bolt can be changed after the installation is finished.

## How to install-2 (Product)

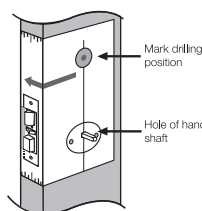
### ✓ Check point before install

➔ After complete "How to install-1 (Mortise lock)", proceed "How to install-2 (Product)".

1. Insert handle shaft to "handle shaft hole" of installation template and stick the template to indoor side. Fold the template along to folding line.

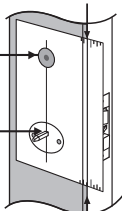
2. Fix the exact position of template and mark the drilling position for hole marking. Mark the drilling position on opposite side in the same way.

#### Make indoor hole



Folding it 90 degree and stick to door surface

#### Make outdoor hole



Make sure that folding line is vertical

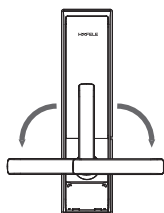
3. Make hole as per specification (Ø32)

4. Set the direction of handle on front cabinet. Pull down the handle to aimed direction until it is fixed with click sound

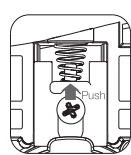
### ※ How to reset the direction of handle

Press up the handle direction changing lever which is located inner side of each cabinet. Handle will be turned back to middle position.

#### Front cabinet



#### Front cabinet inner inside

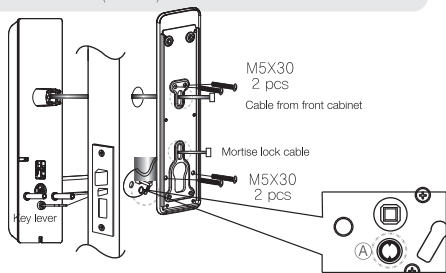


#### Handle direction changing lever

5. Put the cable of front cabinet through the upper hole to indoor.

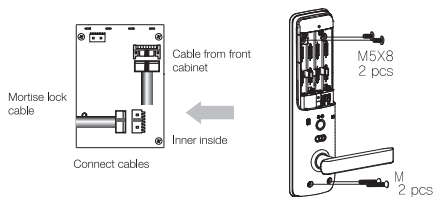
Pull out the cable from front cabinet and mortise lock cable through the hole of back cover.

Fix the back cover to the front cabinet using screws.



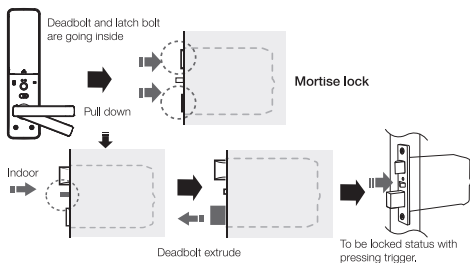
6. Connect two cables to PCB exactly and fix the back cabinet with screws.

### ※ Set the direction of handle of back cabinet



### ✓ Check proper operation of product

#### Back cabinet



✚ Pull out the cable from front cabinet and mortise lock cable through the hole of back cover.

### ✓ Check point after installation

✚ Insert batteries correctly and do open/close test at indoor

※ If you close the door from outdoor as the installation is not perfect, you cannot open the door.

✚ Register secret code as per user manual

※ Factory setting ①②③④